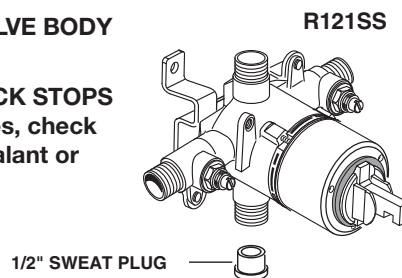


1 INSTALL THE R121SS VALVE BODY

NOTE: REFER TO INSTALLATION INSTRUCTIONS (M965661) SUPPLIED WITH VALVE BODY FOR COMPLETE INSTALLATION AND REPAIR PART INFORMATION.

IMPORTANT: When soldering, remove **PLASTER GUARD, CARTRIDGES** and **CHECK STOPS (IF PRESENT)**. When finished soldering, flush valve body, replace cartridges, check stops (if present) and plaster guard to continue installation. Use thread sealant or Teflon tape on threaded connections.

- See Roughing-in diagram before starting.
- Connections are:
 - 1/2" NOM Copper Sweat or 1/2" NPT inlets
 - 1/2" NOM Copper Sweat or 1/2" NPT tub and shower outlets



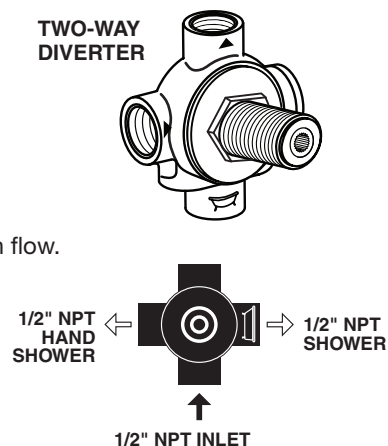
2 INSTALL THE R422 TWO-WAY DIVERTER

NOTE: REFER TO INSTALLATION INSTRUCTIONS (M965673) SUPPLIED WITH DIVERTER FOR COMPLETE INSTALLATION AND REPAIR PART INFORMATION.

IMPORTANT: The reverse side of the body is marked with arrows.

CAUTION: Do not solder near the **VALVE**. Damage to the **SEAL** may occur. Do not seal any outlets. The **DIVERTER** cannot be used as a stop valve. Use thread sealant or sealing tape on threaded connections.

- See Roughing-in diagram before starting. The port with the BATH TUB picture is the high flow.
- The **DIVERTER** can be installed with the inlet rotated in any position.
- All connections are 1/2" NPT.
- For proper positioning the finished wall must be within the side of **PLASTER GUARD**.
- Connect the **R422 TWO-WAY DIVERTER** to the **R120SS VALVE BODY**.



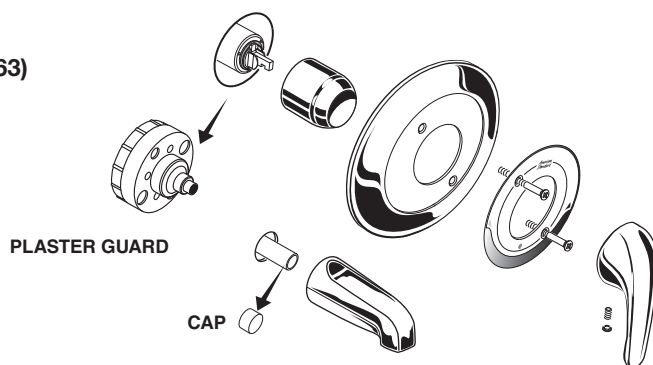
3 MAKE ALL CONCEALED PIPING CONNECTIONS

- See Roughing-in diagram before starting.
- Make Hot and Cold supply connections to the **VALVE BODY**. Inlet and outlet connections to the valve body are 1/2" copper sweat.
- Make Tub Filler connection from **DIVERTER**. (Use the port with the BATH TUB picture). **DIVERTER** IS 1/2" NPT. **TUB SPOUT** connection is 1/2" copper for **SLIP-ON SPOUT**.
- Make the connections for the **HAND SHOWER**. The **HAND SHOWER** connections are 1/2" NPT.
- For support, use **PIPE BRACES** secured to wooden braces. Cap off **HAND SHOWER** and **TUB SPOUT FILLER PIPE**. With the **R120SS VALVE** turned off, turn on water supplies. Check for leaks.
- Finish all wall construction.

4 INSTALL VALVE TRIM

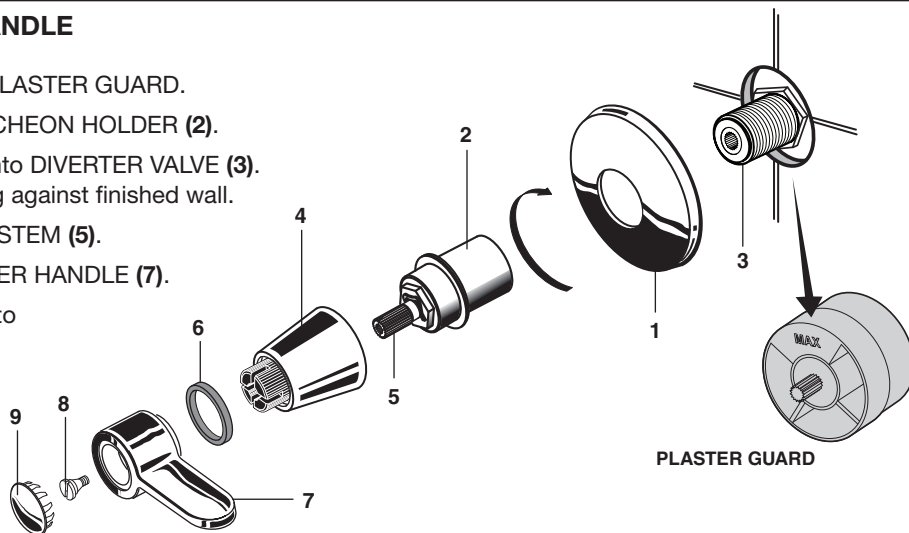
NOTE: REFER TO INSTALLATION INSTRUCTIONS (M968763) SUPPLIED WITH VALVE TRIM KIT FOR COMPLETE INSTALLATION AND REPAIR PART INFORMATION.

- When finished tiling the wall, remove **PLASTER GUARD**.
- Remove plug from shower pipe.



5 INSTALL DIVERTER TRIM AND HANDLE

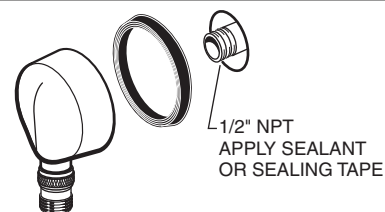
- When finished tiling the wall, remove PLASTER GUARD.
- Place ESCUTCHEON (1) onto ESCUTCHEON HOLDER (2).
- Thread ESCUTCHEON HOLDER (2) onto DIVERTER VALVE (3). Tighten until ESCUTCHEON (1) is snug against finished wall.
- Install HANDLE SKIRT (4) onto VALVE STEM (5).
- Push DECORATIVE RING (6) onto LEVER HANDLE (7).
- Align LEVER HANDLE (7) and push onto HANDLE SKIRT (4). Install HANDLE SCREW (8) and tighten.
- Push INDEX CAP (9) into LEVER HANDLE (7).



6 INSTALL WALL SUPPLY

NOTE: REFER TO INSTALLATION INSTRUCTIONS (M968637) SUPPLIED WITH WALL SUPPLY FOR COMPLETE INSTALLATION AND REPAIR PART INFORMATION.

- Supply to WALL SUPPLY is 1/2" NPT. See rough-in above for detailed information.
- Apply sealant or sealing tape to threads of 1/2" NPT supply nipple.

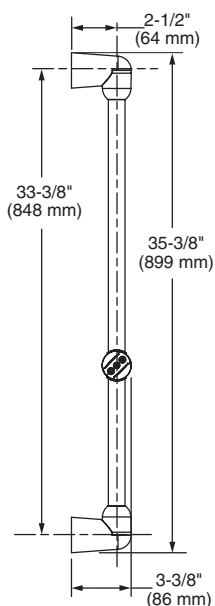


7 INSTALL HAND SHOWER SLIDE BAR

NOTE: REFER TO INSTALLATION INSTRUCTIONS (M968637) SUPPLIED WITH SHOWER SYSTEM KIT FOR COMPLETE INSTALLATION AND REPAIR PART INFORMATION.

WARNING: NOT DESIGNED TO BE A GRAB BAR.

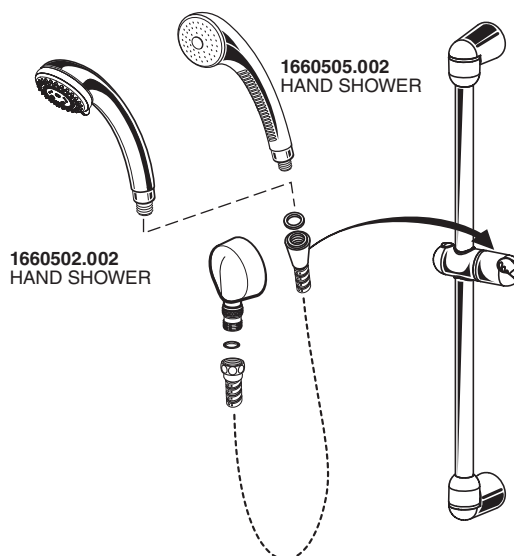
- The height and location of the SLIDE BAR is optional. It can be installed to the right or left side of the R120SS VALVE.



8 INSTALL HOSE AND HAND SHOWER TEST SHOWER SYSTEM

NOTE: REFER TO INSTALLATION INSTRUCTIONS (M968637) SUPPLIED WITH SHOWER SYSTEM KIT FOR COMPLETE INSTALLATION AND REPAIR PART INFORMATION.

- Place the HAND SHOWER into the SLIDE BAR after all hose connections are made. The installation of the SHOWER SYSTEM KIT is now complete.
- Turn on water supplies and check all functions of the SHOWER SYSTEM KIT. Check for any leaks.



CARE INSTRUCTIONS:

DO: SIMPLY RINSE THE PRODUCT CLEAN WITH CLEAR WATER. DRY WITH A SOFT COTTON FLANNEL CLOTH.
DO NOT: DO NOT CLEAN THE PRODUCT WITH SOAPS, ACID, POLISH, ABRASIVES, HARSH CLEANERS, OR A CLOTH WITH A COARSE SURFACE.

American Standard

PRESSURE BALANCE TEMPERATURE/VOLUME CONTROL VALVE

MODEL NUMBER

R121SS

COLONY SOFT SHOWER TRIM

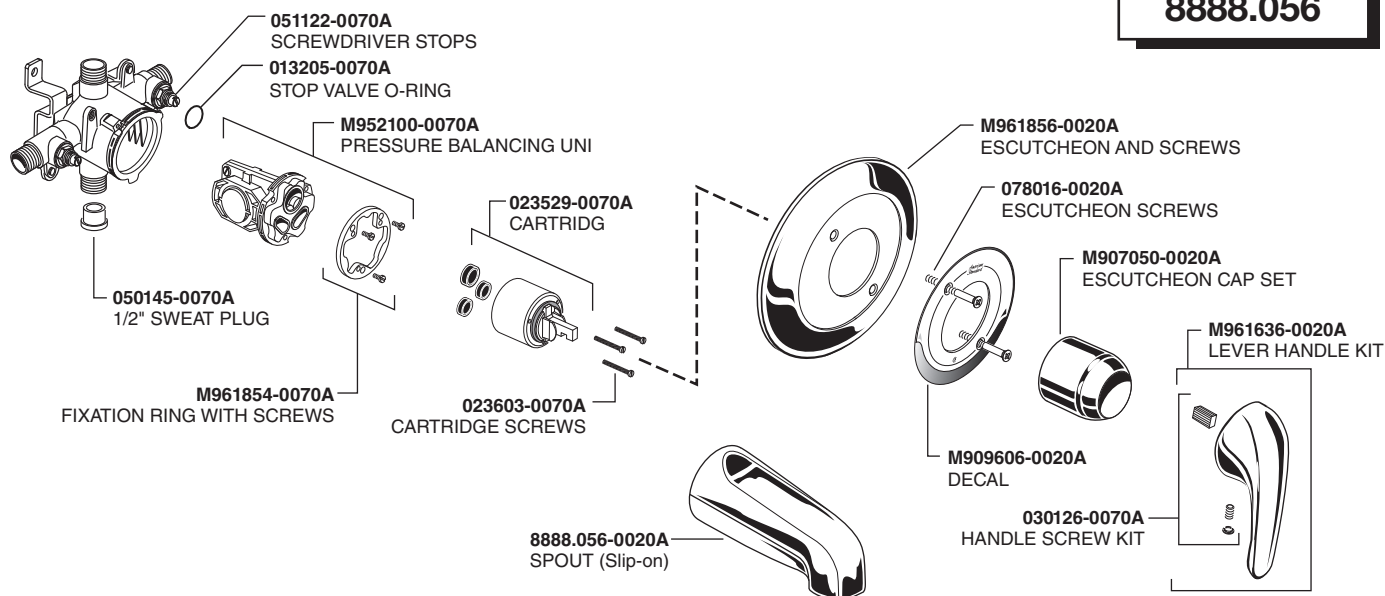
MODEL NUMBER

T675.500

TUB SPOUT

MODEL NUMBER

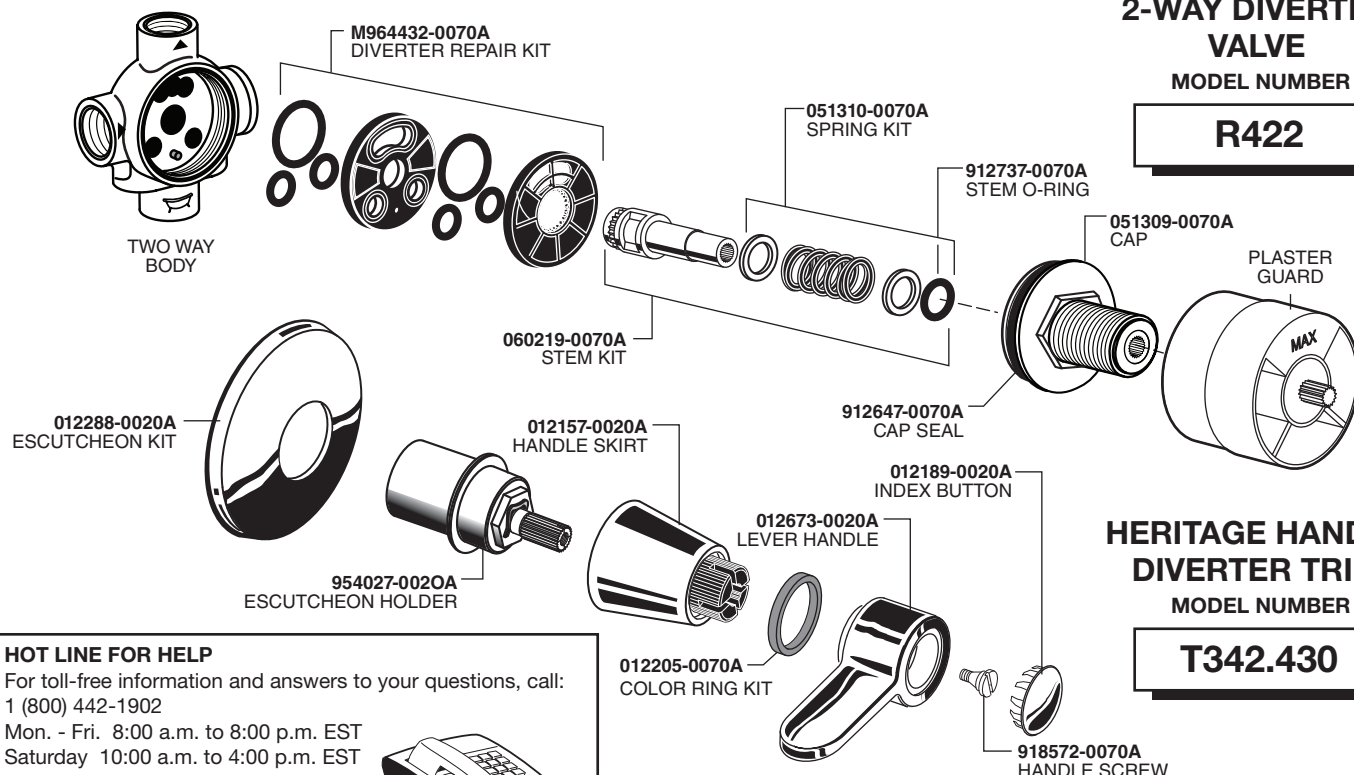
8888.056



2-WAY DIVERTER VALVE

MODEL NUMBER

R422



HERITAGE HANDLE DIVERTER TRIM

MODEL NUMBER

T342.430

HOT LINE FOR HELP

For toll-free information and answers to your questions, call:
1 (800) 442-1902

Mon. - Fri. 8:00 a.m. to 8:00 p.m. EST
Saturday 10:00 a.m. to 4:00 p.m. EST

IN CANADA 1-800-387-0369
(TORONTO 1-905-306-1093)

Weekdays 8:00 a.m. to 7:00 p.m. EST

IN MEXICO 01-800-839-1200



PART OF **LIXIL**

American Standard

FIXED HAND SHOWER PART NUMBER

1660.505.002

1660505.002
HAND SHOWER

WALL SUPPLY PART NUMBER

8888.037.002

8888037.002
WALL SUPPLY

M962520-0020A
CHECK VALVE

030782-0020A
HOSE KIT

3-FUNCTION HAND SHOWER PART NUMBER

1660.502.002

1660502.002
3-FUNCTION
HAND SHOWER

36" SLIDE BAR PART NUMBER

1660.236.002

M919211-0020A
36" SLIDE BAR

M962507-0020A
HAND SHOWER HOLDER

METAL HOSE PART NUMBER

8888.035.002

M950105-0070A
HARDWARE KIT

M962506-0020A
SUPPORT BRACKET

HOT LINE FOR HELP

For toll-free information and answers to your questions, call:
1 (800) 442-1902

Mon. - Fri. 8:00 a.m. to 8:00 p.m. EST
Saturday 10:00 a.m. to 4:00 p.m. EST

IN CANADA 1-800-387-0369
(TORONTO 1-905-306-1093)

Weekdays 8:00 a.m. to 7:00 p.m. EST

IN MEXICO 01-800-839-1200



PART OF **LIXIL**